



# ***Corporate Financial Analyzer System***

(Modern Solution to Corporate early warning system)

© Copyrights 2006 GUSV Technologies Inc., VA USA

**System over View Document V.1.0**



**Table of Content**

***Corporate Financial Analyzer System*** ..... 1

***1. Corporate Financial Analyzer Software Info*** ..... 3

***1.1 Advantages***..... 3

***1.2 High Level Flow Diagram (Corporate Financial Analyzer System)***..... 5

***2. Corporate Financial Analyzer System Software Payment Schedule***..... 9

***3. Corporate Financial Analyzer System Software DB & GUI Overview***..... 9



## **1. Corporate Financial Analyzer Software Info**

This FA Analyzer System (“FAS”) is a management system, which refers to early financial indicators, non-financial factor as the core mainly through the financial statement and other relevant accounting statements, ratios, Analytical statements based on the current and previous financial data. This system helps the corporate management to gather, monitor and feedback of the financial statement in order to strengthen financial status of the company. This system helps the large and small business entities to establish decision-making strategies during controlled and un-controlled factors affecting the financial status of the corporate at any point of time.

Comprehensive consideration of the financial indicator and non-financial factors, establishing the effective financial early-warning system is the important aspect of the modern enterprise financial management.

This system constructs the qualitative pre-warning system and quantitative pre-warning system, through the following models viz., AHP, Z-SCORE MODEL, EVA model, Fuzzy comprehensive evaluation model...etc.

Now more than ever companies are striving to reduce cost improve cash flow and streamline operations. To accomplish this companies are adopting the effective financial early-warning system, which is the important aspect of modern enterprise financial management at each and every stages of corporate transaction.

This FA Analyzer system provides different modern techniques to measure, scale, prioritize and report on the different aspect of financial and non-financial factors.

### **1.1 Advantages**



**At nutshell:** The major advantages over other financial system are qualitative and quantitative pre-warning information at any point of time for any type of corporate day-to-day transactions, which enables the management to make constructive decisions of any controlled and un-controlled factors.

This FAS system provides variety of modern techniques when compare to other systems available in the market. The following areas of corporate financial factors are covered under this system

- Accounts payable
- Accounts Receivables
- Assets
- Inventory
- Investments
- Marketing
- Organizational social economical value
- Product pricing
- Production (shop floor analysis)
- Profit/Loss Analysis
- Supplier selection
- Customer satisfaction
- Capital budgeting
- Organizational structural selection
- Project plan
- Process performance
- General decision making improvement
- Performa Balance sheet
- Corporate Market value Analysis
- Forecasting
- Etc.....



Besides this there are few other modules, which are used to grade the corporate financial status at top-level are as follows:

- Early warning based on Z-MODEL
- Economic value added Analysis (EVA)
- Corporate Financial Ratios
- Year wise comparison of above listed corporate financial controlled & Un-controlled factors.
- Other MIS reports as required

**Software Features:** The Complete flow of this software starts right at this General Financial setup for the Analyzer and goes down to balance scorecard level for any type of corporate. All these modules are inter related and exchanges data between them at any point of time. The following are the major features of this Financial Analyzer software.

1. Web-based software (ASP.NET)/Or Visual Basic Console Application. (Currently VB Applications is available)
2. AJAX Technology/VBScripts.
3. Simple Navigational Tool-Bar at all level.
4. User Friendly data entry forms.
5. Consistency in Data inputs and outputs.
6. Maintenance cost is much less than the maintaing all other modules individually.
7. Total SDLC (system development Life cycle) is with in the 10% of the over all productivity of the company.
8. Easy to maintain and not required much manual interventions.
9. Each module is independent, if required.
10. N number of Transactions entry at any Point of time.
11. Follow-up measures techniques at any point of time at Order level.
12. Top-Down Security features viz., each module can be assigned to any user and in-turn can be assigned to different user by the main user at transaction level.

## **1.2 High Level Flow Diagram (Corporate Financial Analyzer System)**



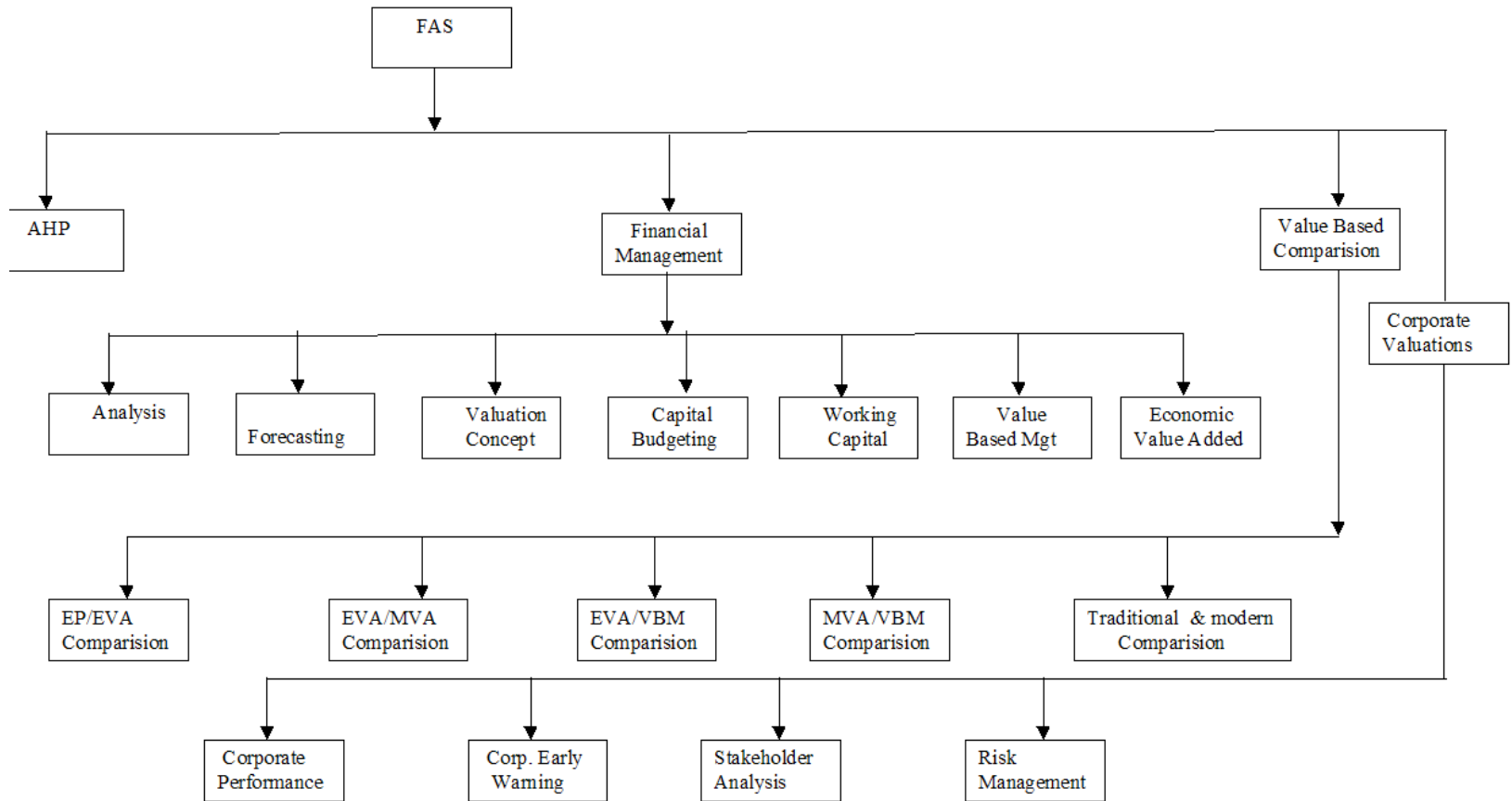
This FAS system has 4 Level of analyzer as mentioned below, which provides the corporate management to separate and analyze the controlled and un-controlled factors at all stages of the day-to-day transactions in the company. The High-level process flow of this FAS system as shown in the following diagram. This High-Level FAS system not an ordinary Financial Management System, which emphasis mostly the Financial Analytical methods, and practical consideration that are helpful in addressing the day-today financial management issues and decision making capability towards the daily transaction at the corporate, Economical and social level. This system uses most of the high Mathematical & Statically analysis method to determine the Corporate and their daily transactions and decision-making concept towards market level as compared to the traditional financial analysis level. In each level of this FAS system address the major managerial finance, which includes

- Evaluation of financial management
- Financial decisions in the firm
- Market Value Analysis
- Stock Value Analysis
- Risk Management
- Modern Techniques in Financial Management
- Early warning system

The above Major sections have been further classified into the following sub categories, which are the MAIN MENU ITEMS in the FAS system.

- AHP (Analytical Hierarchal process)
- Modern Financial Management
- Value Based Comparisons
- Corporate Valuation
- Corporate Performance
- Risk Management

#### **Diagram-00-ProcessHL**



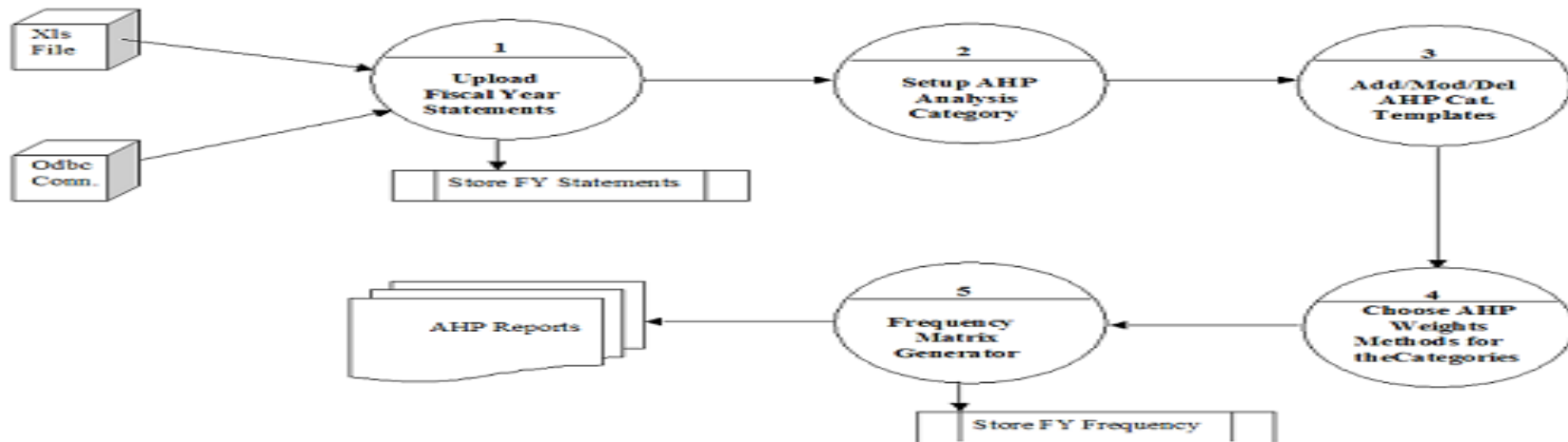
The following are the 4 Levels of early warning system:



- AHP (Analytical Hierarchal process): Which under go most of the financial areas of shareholders equity to corporate expenses. Each categories of Analytical process allows the user to manage their templates through their system, which also in-turn provides the ability to alter the pre-defined templates exists in the system. The following diagram shows the complete process flow, which records the current and past data for future analysis.

**Diagram-01-ProcessHL**

**Diagram 01 – AHP Process Flow Diagram**



- Value Base Management process: Which includes comparisons of different Economical values with the traditional value based methods.



## ***2. Corporate Financial Analyzer System Software Payment Schedule***

- **At the time of Registration/Booking** : **50%**
- **On completion of Base DB Design** : **30%**
- **On completion of GUI Design** : **10%**
- **At the time of handing over the Proto-Type** : **10%**

Note: Above payment schedule is based on the Final negotiable price

## ***3. Corporate Financial Analyzer System Software DB & GUI Overview***

Upon order placement, will provide the GUI proto-type.